

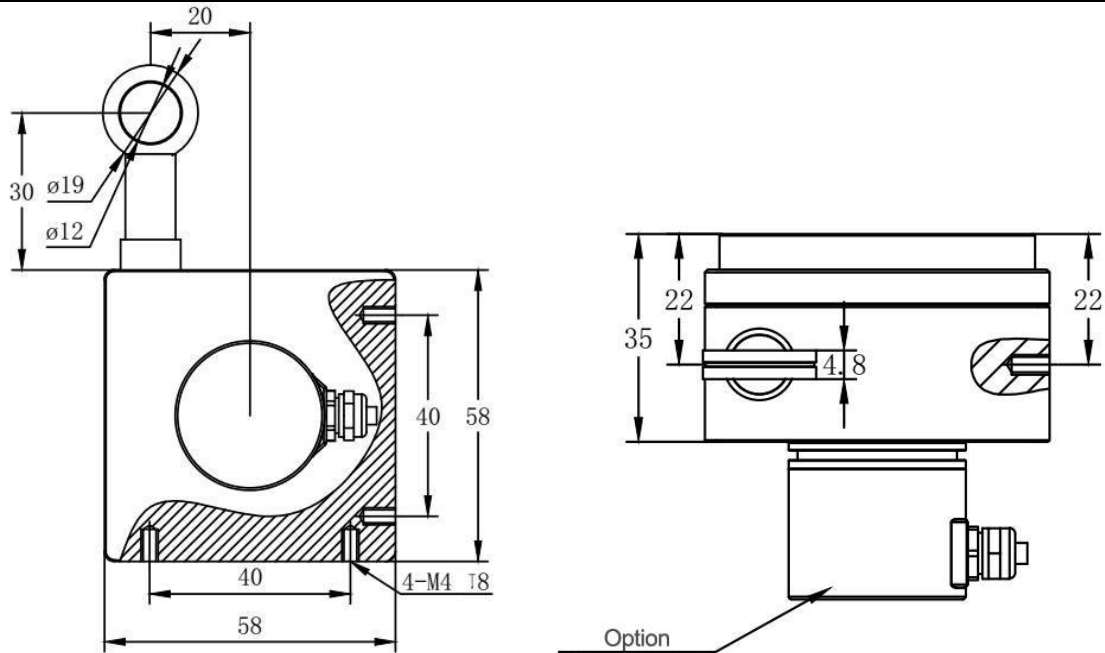
### Features and applications:

- Measuring range 0~1000mm
- Various interface for option
- Compact housing and flexible assembly
- High resolution
- Applied in harsh environments



<b>Model</b>	RNLS125
<b>Measuring distance</b>	1000 mm
<b>Limit distance</b>	1500 mm
<b>Single turn length</b>	125 mm
<b>Cable diameter</b>	0.6 mm or 0.8 mm
<b>Tension range</b>	5-15N
<b>Measuring accuracy</b>	±0.05%
<b>Max. speed</b>	4 m/s
<b>Body material</b>	Aluminum
<b>Cable material</b>	316L Stainless steel with plastic coating
<b>Operating temperature</b>	-45°C.....+105°C
<b>Protection class</b>	IP54/IP65
<b>Life time</b>	5 million times
<b>Signal option for Absolute encoder</b>	
<b>Output signal</b>	4-20mA , 0-5V , 0-10V , 0-20mA , SSI , Parallel , RS485 , MODBUS-RTU , Profibus-DP , CANopen
<b>Operating voltage</b>	10....30Vdc or 5Vdc
<b>Signal adjustment</b>	Value of each turn / Direction/ Preset position/ External zero position/ Total range adjustable,
<b>Protection class</b>	IP65 (Housing IP67/ Shaft IP65 )
<b>Signal option for Incremental encoder</b>	
<b>Output mode</b>	HTL/push-pull output, TTL/RS422, voltage output, current output
<b>Output signal</b>	A B , A B Z or A B Z+ A/ B/ Z/
<b>Operating voltage</b>	5±0.25 Vdc or 10....30Vdc
<b>Number of pulse</b>	1~5000
<b>Connection</b>	Cable or Connector

### Dimension Drawing:



### Order Reference

RNLS125	-1000	B	L	E	C01	D
Model	Measuring range	Encoder type	Output signal	Operating voltage	Connection	Special customization
RNLS125	0100: 100mm 0500: 500mm 1000: 1000mm	A: Incremental pulse output B: Absolute signal output	FB: Pulse signal L : 4-20mA 0L : 0-20mA V : 0-5V 0V : 0-10V RS : RS485 R2 : RS422 RM: Modbus SG : SSI Gray Code SB : SSI binary PG: Parallel Gray code PB : Parallel binary CA : CANopen DP : Profibus-DP NT : DeviceNet	E: 10-30Vdc A: 5Vdc	C01: Side cable C02: Rear cable C03: Side connector C04:Rear connector	D: Cable extension E: Mounting plate F1: With cover